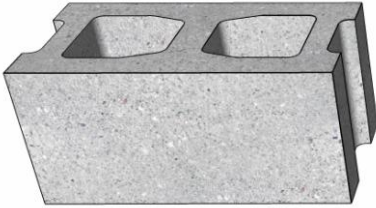
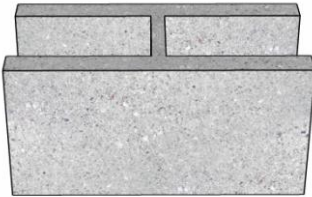


# Next Generation ASTM C90 Walls Offer Higher R-Values.

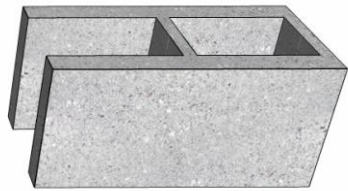
Traditional ASTM C90 3-Web Block



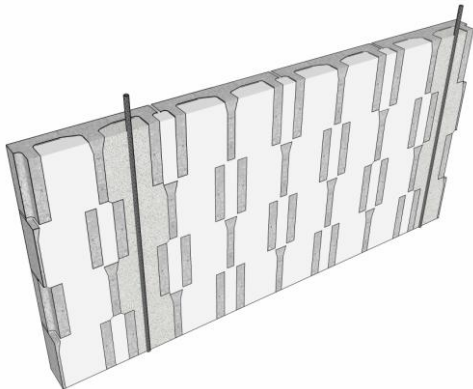
Next Generation ASTM C90 H-Block



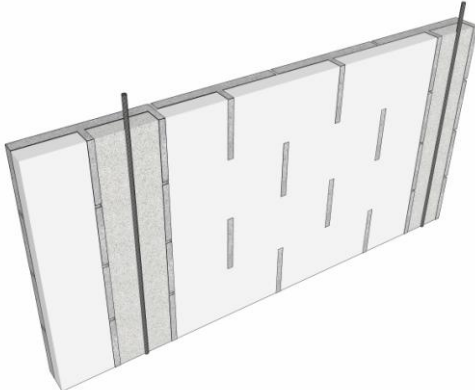
Next Generation ASTM C90 A-Block



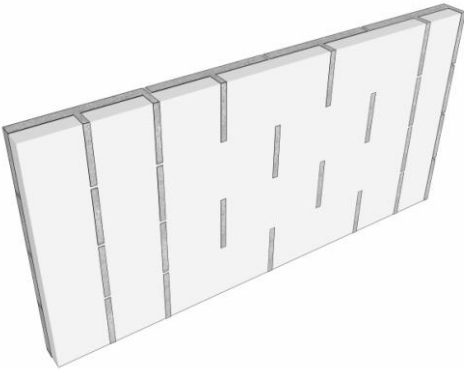
Dramatically increased R-Values are achieved because of less thermal bridging.



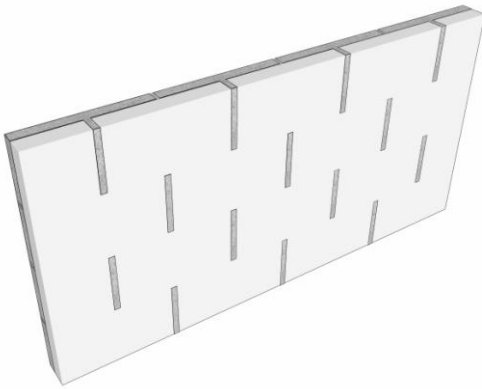
Traditional 3-Web Block Wall Reinforced @ 48" o/c.



Next Generation Hybrid Block Wall Reinforced @ 48" o/c.



Next Generation Hybrid Block Wall w/o Reinforcing



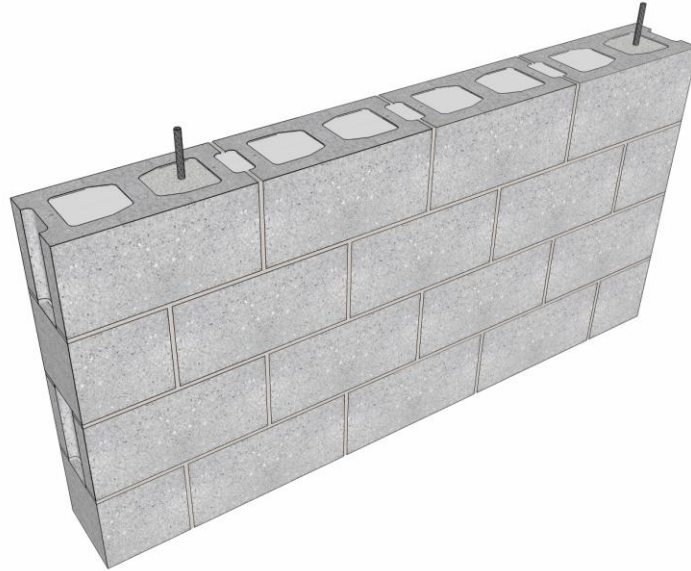
Next Generation 100% H-Block Wall w/o Reinforcing

Higher R-Value means that foamed single-wythe CMU walls can more easily meet rigorous energy code requirements.

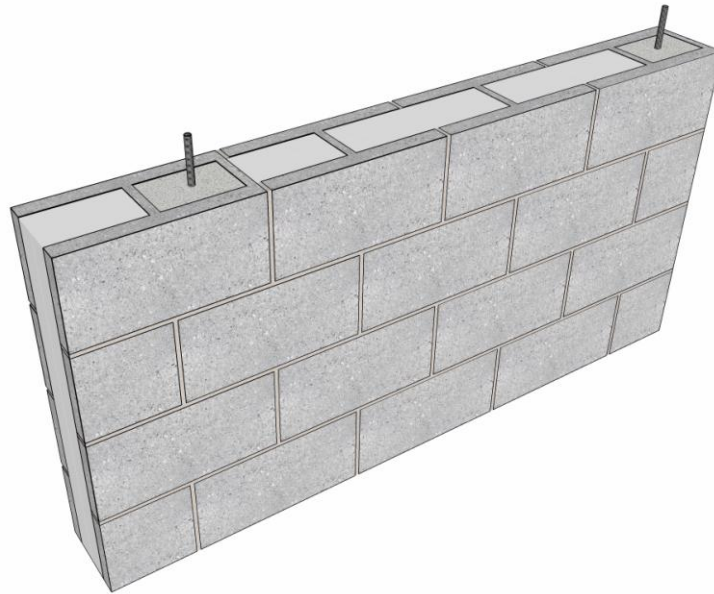


**Though the webs change on the inside,  
nothing changes on the outside.**

**Pre-Revision ASTM C90 *3-Web Block Walls* and  
Next Generation ASTM C90 *Hybrid Block Walls* Look Exactly Alike**



**Traditional 3-Web Block Wall Reinforced @ 48" o/c.**



**Next Generation Hybrid Block Wall Reinforced @ 48" o/c.**

**Hybrid concrete masonry is still concrete masonry.**