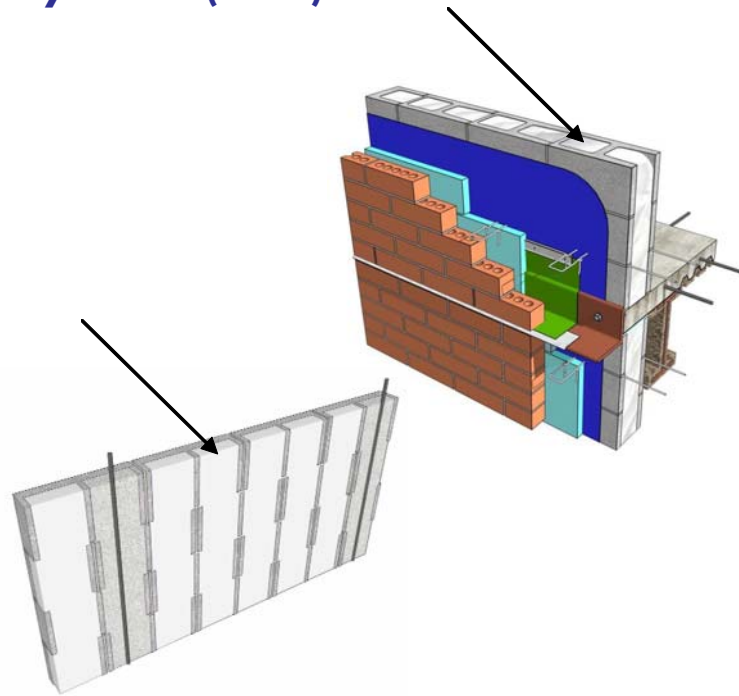
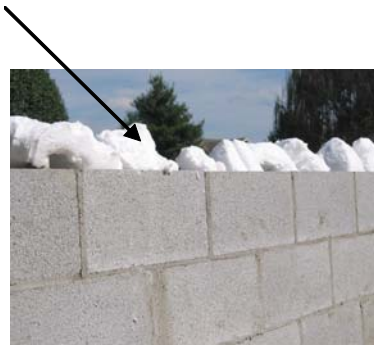


CFI FOAM, INC.

Injection Foam Products for the Cores of Concrete Masonry Units (CMU)



Core Foam Masonry Foam Insulation® is not associated with and is a different product from the Core Fill-500™ products manufactured by Tailored Chemical Products, Inc.

Drawings for Illustrative Purposes Only

Product Description:

- R-Value per inch: 5.0 inch @ 25°F; 4.6 inch @ 75°F
- Flame Spread: <25 per ASTM E-84 @ 4"
- Smoke Developed: <450 per ASTM E-84 @ 4"
- Fire Classification: Class A
- STC Rating: 54-60 dB in 8" CMU walls
58-61 dB in 12" CMU walls
- Shrinkage: <0.5%
- VOC Emissions: <16 ppb

Application:

Walls can be filled with foam using either top-fill or pressure-injection techniques using 5/8" to 7/8" holes. Prior to installation, the wall should not have any standing water in the CMU cores and no visible wetness on the exterior surface. A 72-hour curing period is normally suggested prior to painting wall. Foam should not be exposed to surfaces over 190°F for an extended period of time. Foam should not be used for flotation, in horizontal applications or as a waterproofing material.

Basic Use:

Injection Foam Insulation for Enclosed Cavity Applications.

Since cfiFOAM products are a solid, physical characteristics such as boiling point, vapor pressure, vapor density, percent volatiles, evaporation rate, etc., do not apply.

- | | |
|-----------------------|---|
| Color and Odor: | White semi-rigid foam with minimal odor |
| Density: | 0.5-1.0 lb/ft ³ |
| Usage Precautions: | Ventilate well until foam fully cures. |
| Hazardous Components: | None present at levels above 0.1% |
| Personal Protection: | Safety glasses and gloves |
| Testing: | ASTM E-84, ASTM C-518, ASTM D-1621, ASTM E-96, ASTM D-2842, NFPA 259, ASTM D-5116 |

© cfiFOAM, Inc. - 2014



cfiFOAM, Inc.
P.O. Box 10393 | Knoxville, TN 37939
800-656-FOAM (3626)
Fax: 865-588-6607
www.cfifoam.com